



www.bradyaust.com.au/bbp31

FAST, SIMPLE AND POWERFULLY VERSATILE

THE WAY LABEL MAKING SHOULD BE



BBP[®]31 SIGN & LABEL PRINTER

FAST, SIMPLE AND POWERFULLY VERSATILE

THE WAY LABEL MAKING SHOULD BE

HIGH PERFORMANCE PRINTING AT YOUR FINGERTIPS

Produce professional quality, customised signs and labels on demand. No external supplier minimum order quantities or lead times – simply print whatever you like – instantly, whenever you need to. Investing in a BBP®31 Sign & Label Printer can help your business to save money, improve productivity and stay compliant with safety standards.

FOR ALL YOUR SITE IDENTIFICATION NEEDS

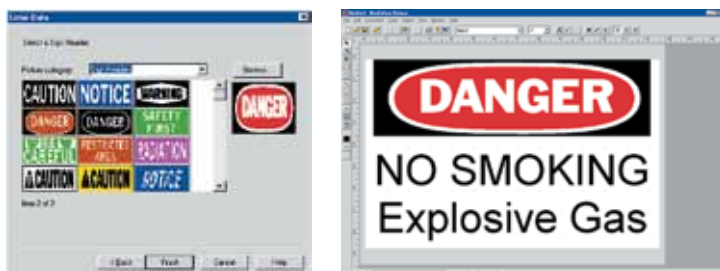
This one printer can take on all the different identification needs of your facility - Safety, Fire, Directional, Asset Management, Wires & Cables...your applications are endless. The BBP®31 is compatible with a wide variety of Brady label materials including highly innovative solutions like glow in the dark, magnetic, repositionable, tamper evident and even cold temperature resistant.

COLOUR WITHOUT THE COST

A range of pre-printer header labels are available for the BBP®31. This allows you to create colour labels using an affordable single colour printer. There are 6 headers available to suit a variety of applications – Danger, Warning, Notice, Restricted Area, Security Notice and Safety First. Smaller label quantities per roll are available for lower volume users.

STAND ALONE USE OR PC OPERATION

You decide how you'd like to use the printer – either connected to your PC, or as a stand alone unit. The full colour, touch screen display lets you drag and drop objects and text until your label looks exactly the way you want it. The touch and go display allows multiple users to have access to the machine. Markware™ Software offers the industry's most advanced PC designs and editing capabilities. There are more fonts, graphics, templates and import tools – and that's just the beginning.



EASY TO USE FEATURES

The BBP®31 is so simple, your whole team can use it. Packed with smart features, users can just walk up and print.

- Auto font and image sizing to fit label
- Built in label templates and symbols library
- Battery and supplies indicator
- Auto serialisation and barcoding functions
- Space saving fold in keyboard

EASY TO LOAD SUPPLIES

Drop in your material and ribbon cartridges, the printer does the rest. These supplies feature smart cell technology that tells the printer exactly how to format your label according to the material that's inserted.



BRADY – YOUR PARTNER IN DEVELOPING A VISUAL WORKPLACE

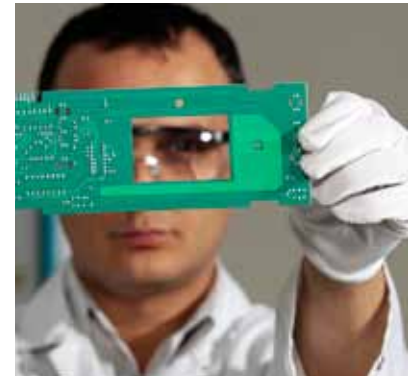
Visual identification protects lives, reduces costs and downtime. Providing visual identification around your workplace is a crucial communication tool in any work environment. Developing a visual workplace can help prevent injuries and ensure employees and visitors are aware of possible dangers and hazards that are ahead in certain situations and/or environments. A visual workplace can also assist with displaying Work Health & Safety Standards, equipment instructions, dangerous goods storage information, inventory control and much more.

With the BBP®31 Sign & Label printer you can produce all of your site safety and facility ID onsite and on demand to reduce injuries and improve efficiencies in your workplace. The more you identify, the safer your workplace.



WE DEVELOP OUR OWN SOLUTIONS

Brady is the leader in industrial label printing. We are experts in designing and building label printers, materials and software and we continue to re-invent the space time and time again. It is this direct involvement in all elements of a Print On Demand solution that ensure ease of use and high quality performance. By partnering with Brady you have first access to the latest innovations in visual identification solutions.



WE TEST...AND TEST AGAIN

There's a reason why Brady label materials lead the industry in durability and performance. It's because we design and manufacture them ourselves and then put them through rigorous, painstaking tests and trials. We set the standards high – because we know it's the only way our materials can exceed your expectations.



WE'RE ALWAYS HERE TO HELP

Brady partners you every step of the way through selecting and implementing your Print On Demand labelling system. We have a specialised team who can visit your site and find out exactly what you need and expect from your solution. They can then show you and let you test out the most relevant system for your needs. And once you have decided, our technical support and customer service teams are ready to help you continue to get the most of your system for years to come.

Pre-Printed Header Labels (B-595)

Enables you to produce full colour labels with a single colour printer.

Designed in accordance with Australian Standard® AS1319, the Pre-Printed label range is exclusive to Brady. Smaller quantities per roll are available for small and medium sized sites.

- Durable, low-shrink vinyl with our most aggressive adhesive
- Conforms to irregular, curved, rough and highly textured surfaces (painted cinder blocks, uneven wood, textured plastics, paper-jacketed pipes, powder-coated surfaces)
- Adheres to “difficult” low-surface energy items (PVC piping, blow-moulded equipment cases, ABS plastics, recycled plastics)
- 6 headers available: Danger, Warning, Notice, Restricted Area, Security Notice and Safety First

Service temp: -40°C to 82°C

Application temp: -18°C to 82°C

Average Outdoor Durability: 8 to 10 years



Pre-Cut Blank Labels (B-595)

For general purpose, peel-off-and-apply identification.

- Ideal for a wide range of labelling applications
- Includes 2 sizes that are pre-cut and pre-sized to fit heavy-duty rigid tags
- Indoor/outdoor grade material
- Conforms well to rough, irregular and “difficult to adhere to” surfaces

Service temp: -40°C to 82°C

Application temp: -18°C to 82°C

Average Outdoor Durability: 8 to 10 years



Indoor/Outdoor Vinyl (B-595)

For general facility and safety identification: Our best industrial vinyl yet.

- Durable, low-shrink vinyl with our most aggressive adhesive
- Conforms to irregular, curved, rough and highly textured surfaces (painted cinder blocks, uneven wood, textured plastics, paper-jacketed pipes, powder-coated surfaces)
- Adheres to “difficult” low-surface energy items (PVC piping, blow-moulded equipment cases, ABS plastics, recycled plastics)

Service temp: -40°C to 82°C

Application temp: -18°C to 82°C

Average Outdoor Durability: 8 to 10 years



Low-Halide Polyester (B-569)

For labelling stainless steel and smooth surfaces.

- Low-halide content for labelling stainless steel pipes and surfaces
- Applies best to very smooth surfaces and ideal for mounting to rigid panels

Service temp: -40°C to 100°C

Application temp: -18°C to 100°C

Average Outdoor Durability: 3 to 5 years



Retro Reflective Tape (B-584)

For highly reflective identification that shines back brightly when struck by light.

- Ideal for labelling outdoor utility poles and pedestals, jobsite equipment and roof-top equipment
- Recommended for low light or inclement weather conditions

Service temp: -40°C to 70°C. Application temp: -18°C to 70°C (yellow & orange), 10°C to 70°C (silver)

Average Outdoor Durability: 4 to 6 years



BradyGlo™ High-Intensity Photoluminescent Tape (B-526)

For glow-in-the-dark identification up to 10 hours!

- Designed for directional and evacuation marking
- Ideal for marking emergency utility shut-offs, fire extinguishers, alarm pulls, and vital equipment controls

Service temp: -40°C to 60°C

Application temp: 4°C to 40°C



Repositionable Vinyl (B-581)

For 5S and lean applications.

- Aggressive adhesive stays in place but removes cleanly without leaving adhesive residue
- Ideal for temporary, removable, and repositionable labels, like 5S and lean inventory labels

Service temp: -40°C to 82°C

Application temp: 10°C to 82°C

Average Outdoor Durability: 5 years



Printable Magnetic Supply (B-509)

Easiest and quickest material for removing and repositioning.

- Non-adhesive magnetic material that can be printed on directly
- Ideal for reusable and repositionable identification applications

Service temp: -18°C to 70°C

Average Outdoor Durability: 3 to 5 years



Tamper Evident Metallised Polyester Tape (B-438) & High Temp Metallised Polyester Tape (B-565)

For secure identification that indicates if it has been tampered with.

- B-438 tape leaves a “checkerboard” footprint if removed and a checkerboard also appears on top surface of label to prevent label re-use
- B-565 material has a high upper temperature rating and is not tamper evident
- Ideal for product rating plates, product warranty labels and asset identification labels

B-438: Service temp: -40°C to 40°C

Application temp: 10°C to 40°C



Cold Temperature Application Material (B-549)

For identification in temperatures as cold as -40°C.

- Special adhesive permanently adheres to extremely cold surfaces
- Can be applied in -23°C and lasts in -40°C
- Ideal for cold storage warehouses, coolers, freezers, and short-term winter outdoor use

Service temp: -40°C to 100°C

Application temp: -23°C to 100°C

Average Outdoor Durability: up to 1 year



Make Your Own Valve Tags

Heavy-duty valve tags and industrial tags.

- Use with Pre-Cut Blank Labels (B-595) from above (pre-cut to fit tags)
- Tags have centre hole for hanging; corner holes accept round wire or flat fastening straps
- Tag is non-conductive, non-corrosive; resistant to high-temperatures & impact

Tag Service temp: -40°C to 127°C



Non-Adhesive Tag Stock (B-551)

For safety, lockout and general purpose hang-tagging.

- Non-adhesive, semi rigid card stock
- Easy to hole-punch; optional snap-in grommets available



Service temp: -40°C to 89°C

Average Outdoor Durability: up to 2 years

Thickness: 0.35mm

Raised Profile Labels - Engraved Plate Substitutes (B-593)

Costs up to 80% less than engraved legend plates.

- High gloss, polyester label with thick 0.70mm raised profile and ultra-aggressive adhesive
- High performance, low cost substitute to engraved plates
- 10-year outdoor durability rating
- On-demand labelling: labels print out in less than 4 seconds
- Flexible labelling options: 6 colours, 7 rectangular sizes, 5 pushbutton sizes (including keyed and non-keyed 22.5mm and 30.5mm hole dia keyed)



Service temp: -16°C to 100°C

Application temp: 10°C to 100°C

Average Outdoor Durability: up to 10 years

Self-Laminating Cable & Wire Labels (B-427)

For wire and cable identification: Our most popular wire & cable labels.

- Conformable material designed to adhere to highly curved surfaces, wires and cables
- Features a white printable area with clear "tail" that wraps around marker
- Clear tail serves as over-laminate to protect the text, providing superior resistance to abrasion, dirt, oils, solvents, water and excessive handling



Service temp: -40°C to 70°C

Application temp: 10°C to 70°C

FAST, SIMPLE AND POWERFULLY VERSATILE

THE WAY LABEL MAKING SHOULD BE

Part No.	Description
873226	BBP®31 Printer* plus Markware™ software
873227	BBP®31 Printer* standalone (no software)**
108365	BBP®31 carry case
142117	BBP®31 dust cover

*BBP®31 Printer ships with printer, power cord, drivers CD, stylus, cleaning kit, cutter cleaning tool, quick start guide and documentation holder. **Current MarkWare owners: Markware v3.8.1 required for use with BBP®31. MarkWare v3.7 or higher required to upgrade to v3.8.1. Both upgrades are free and available at www.BradyID.com.

For a full list of ribbons and labels available, please request a copy of our Parts List.

Printing Dimensions	Max Label Height: 107.95mm Max Label Length: 3.04m (Continuous Tape)
Label Types	Continuous Tapes and Pre-Cut Size Labels
Print Colour	Single Colour – 8 spot colours
Print Resolution	306dpi
Printer Dimensions And Weight	228.6 mm H x 304.8 mm W x 279.4 mm D (0.02 cubic metres) 6.48kg
Power Supply	AC Power Included
Print Speed	76.2mm per second
PC Connectivity	Yes - connect to PC via USB Includes Microsoft® Windows driver CD Design and Print from MarkWare™ Software and Microsoft® Windows® Applications e.g. Microsoft® Word® USB port for remote memory / import of images, font styles and label design files
Stand-Alone Design	Yes with the full colour 150 x 100mm built-in display on the printer
File Storage	50MB Internal Storage – this means you can store 100's of labels internal to the printer. USB port for external memory
Font Styles	4 built into printer. Import more via USB port. 100's available with Markware™ Software
Font Sizes	20.32mm - 99.06mm (with Markware Software)
Templates Library	Yes in-built ready made library with full range of templates for all major safety, facility and pipemarking applications.
Serialisation Function	Yes
Barcode Function	Yes
Symbols	500+ built into printer, 1000's when used with MarkWare™ Software Import your own images and logos via USB port

Brady Australia Pty Ltd
S4-S6 Regents Park Estate
391 Park Road
Regents Park NSW 2143

Phone: 1800 620 816
Fax: 1800 805 076
www.bradyaust.com.au

